

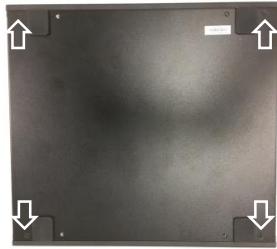
MX1-10FEP

Quick Assembly Guide



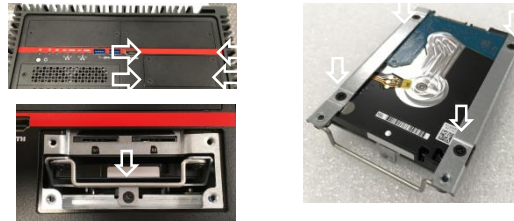
5615D8050001

Open Bottom Cover



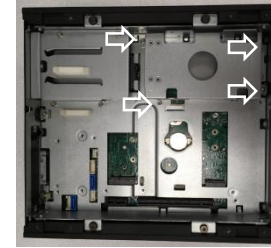
1. Loosen M3 screws(x 4) from Bottom cover as the arrow locations.

Install/Remove Removable 2.5" HDD



2-1. Loosen M3 screws(x 4) from HDD cover.
2-2. Remove M3 screw from bracket.
2-3. Pull/push HDD bracket by handle bar.

Disassemble Internal SSD Bracket



3. Loosen M3 screws(x 4) as the arrow directions.

Install 2.5" SSD into Internal SSD Bracket (Bottom)



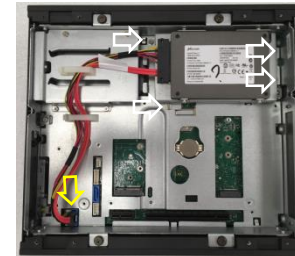
4. Tighten M3 screws(x 4, pack 452D80500006) for 2.5" SSD and M2.5 screws(x 2, pack 452D80500005) for SATA cable.

Install 2.5" SSD into Internal SSD Bracket (Top)



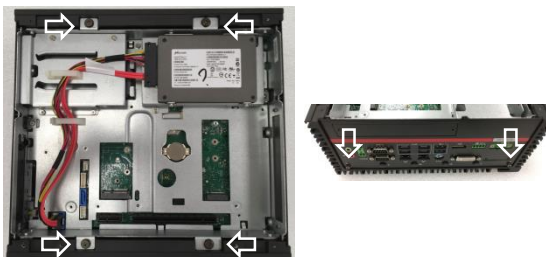
5. Tighten M3 screws(x 4, pack 452D80500006) for 2.5" SSD and M2.5 screws(x 2, pack 452D80500005) for SATA cable.

Fix Internal SSD Bracket



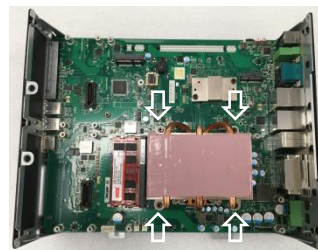
6. Tighten M3 screws(x 4) for internal SSD bracket and insert SATA cable to main board.

Disassemble Mid-Frame



7-1. Loosen M4 screws(x 4) from Mid-Frame.
7-2. Loosen M3 screws(x 2) from Rear-Cover.

CPU Heat-sink Installation



8. Fix CPU heat-sink by M3 screws(x 4, pack 452D80500002) as arrow shown.

DRAM Installation



9. Install DRAM to SO-DIMM slot